



AKASYA COMPLEX
EVRENOL ARCHITECTS

Akasya Complex is located in Istanbul Turkey in between of one of the Istanbul's oldest residential areas with its historical atmosphere, and a developing area which has developed rapidly as a result of residential and commercial function in the recent years.

Akasya has been designed with an architectural approach that preserves the values of both districts and also observes the requirements of the urban life redefined recently.

In a manner that is contrary to the common 'mass' residence production approach, a high quality natural environment and social facilities were created for the purpose of contributing value to the city life. The project has been divided in 3 zones called Lake Zone, City Zone and Wood Zone as 3 different phases.

PROJECT DATA:

Gross Built Area : 271.475 m²

Site area: 141.225 m²

Construction area: 271.475 m²

Landscape area : 82.275 m²

Residential area : 216.775 m²

Social areas: 4.000 m²

Total number of units:

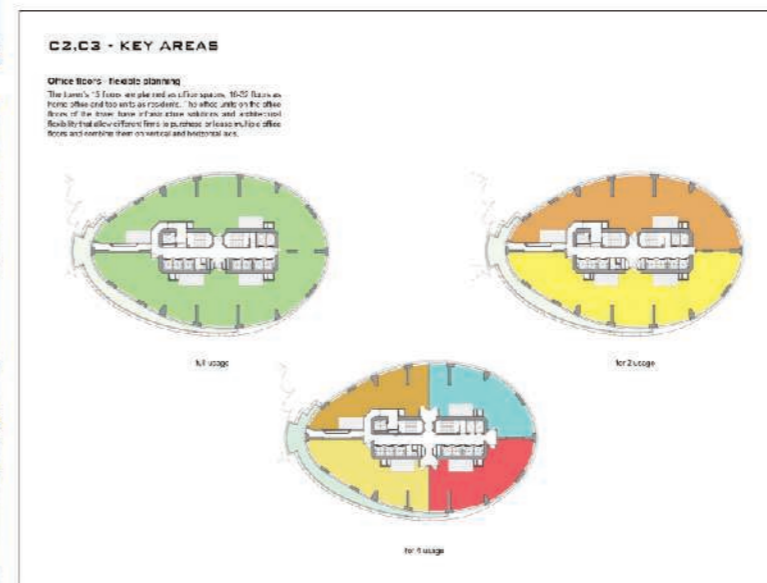
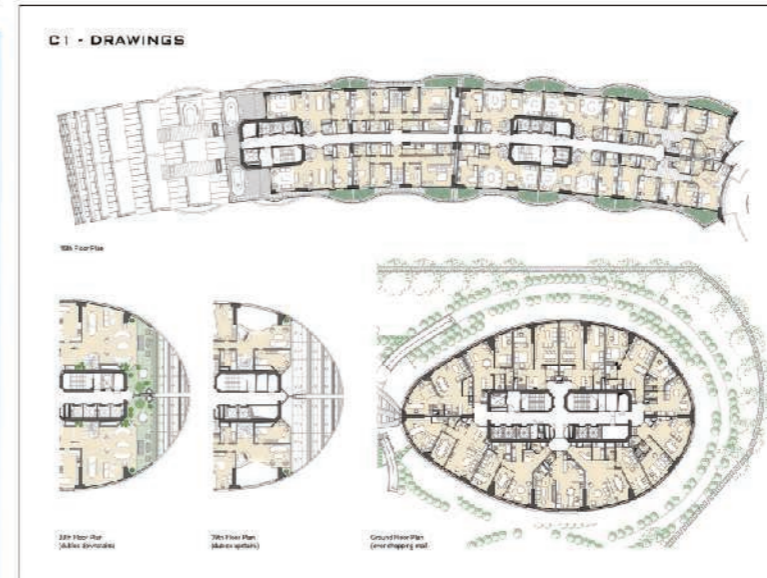
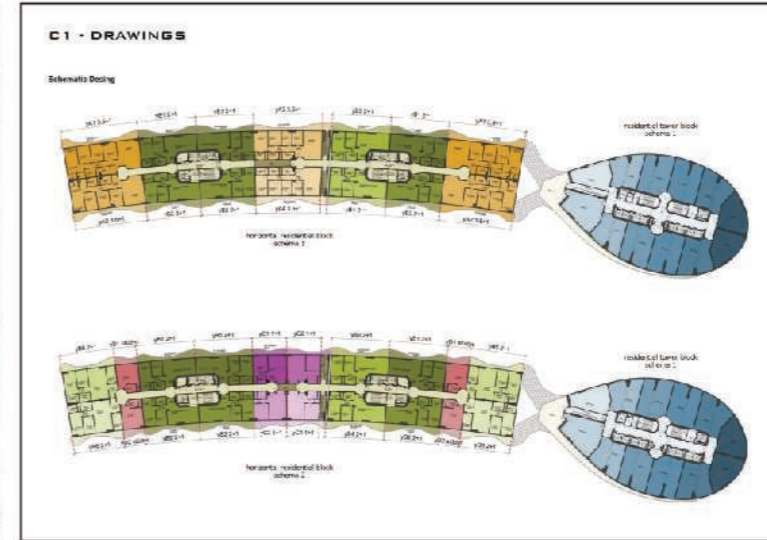
1156 residences / 165 home-offices / 35 offices

Total number of different unit types:

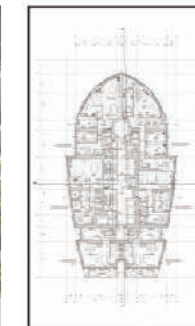
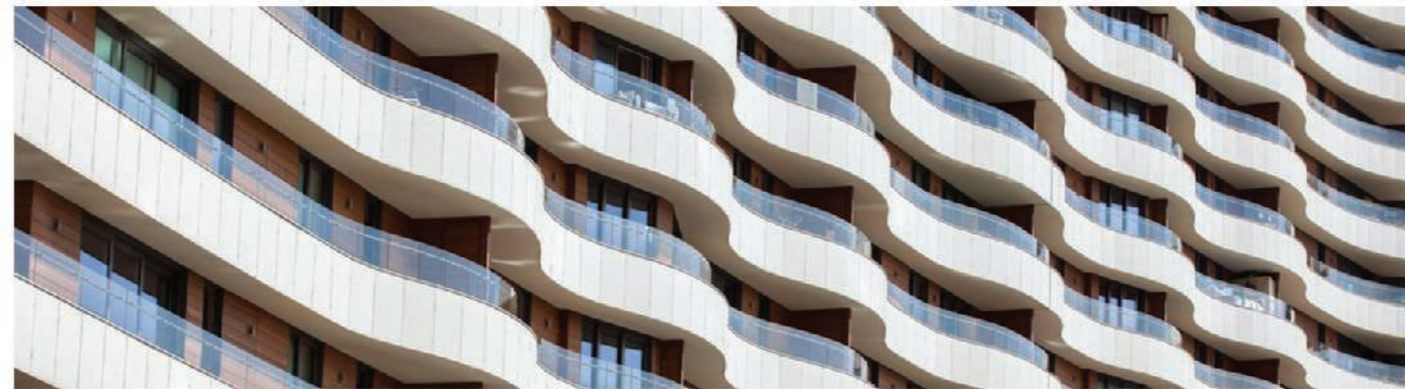
154 residences / 19 home-offices / 7 offices



1. Cooperate for fair and sustainable development initiatives in active collaboration with disadvantaged people or communities. This process shall follow principles of human solidarity, non-discrimination and will be aimed at promoting their self-sufficiency; the "Lake Zone" is not only focusing on a landscape design but also trying to open new aspect of large-scale landscaping in high levels. This part has been created around the biological pond created through the revitalization of the waterway and located at the center of the land plot. Making this newly created natural texture a part of the daily life in this parcel, both as a view and a means of recreation, is shaped the design. The terrace gardens at the residential areas were also filled with 40 cm soil thickness, allowing for natural germination and even growing 2.5 m trees or vegetation so it provides the habits of bionic consuming for inhabitants. The fact that the buildings are located in a manner that protects them from the blustering north-east wind, has allowed the use of sliding windows even in the towers. This approach, supporting the use of fresh air and outdoor areas in every single apartment. The design of greens has been continued in the balconies of each apartment with the same style to admit the value of sustainable design and to be a built reference of a sustainable high-raised mixed use project in Turkey.



2. Defend, promote and enable access to adequate and dignified habitat for all as a 'Fundamental Human Right'. Since the main mission of Akasya complex is to bring a live life in city with its visual aesthetics, facilities and social model which is the right for all the city inhabitant so The "City" stage of the Akasya Project which is located on the mall, has been created to constitute an alternative to the shopping axis on the Kadıköy - Bağdat Avenue. Contrary to the tranquil environment of the "Woods" and the "Lake" stages, the "City" stage, which consists of a tower and a horizontal block, offers its guests a more dynamic lifestyle. The "City" stage is open for all kinds of uses and persons 24 hours. Thus the roof of the mall, which is supported with social facilities suitable for gatherings, invitations and sports events, and rich landscape planning, offers a recreational space, which, in addition to the oval garden that is located in the center of 3 parcels, allows a dynamic communal area, which can meet any need of the modern daily life.



3. Share knowledge, promote discussion, reflection and awareness, and collaborate in the advancement of the 'social production of habitat';

Master plan design of the project and the appearance of the buildings enriched the site which is newly pointed to be a new city-center of Istanbul's Asian side.

Akasya is located in Acibadem, a district that is at the periphery of Üsküdar, which is one of Istanbul's oldest residential areas with its historical atmosphere, and Ataşehir, which has developed rapidly as a result of residential and commercial programs in the recent years. Akasya has been designed with an architectural approach that preserves the values of both districts and also observes the requirements of the urban life which have been redefined recently. In a manner that is contrary to the common residence production approach a high quality natural environment and social facilities were created for the purpose of contributing value to the city life. Solutions were sought for the requirements set forth by urbanization and being an urban-dweller, through the utilization of modern technology in infrastructures and superstructures.